

MONTHLY MEMBERSHIP PROGRESS REPORT

District 13 OH7

Results as of: 4/30/2026

GMT:

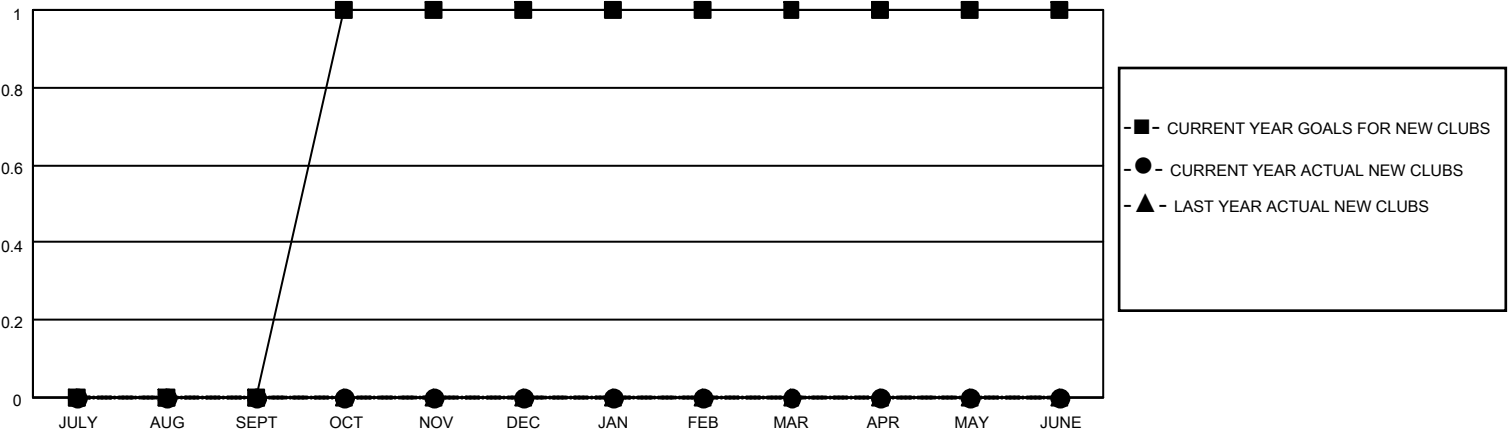
LOCATION OHIO

GMT CA

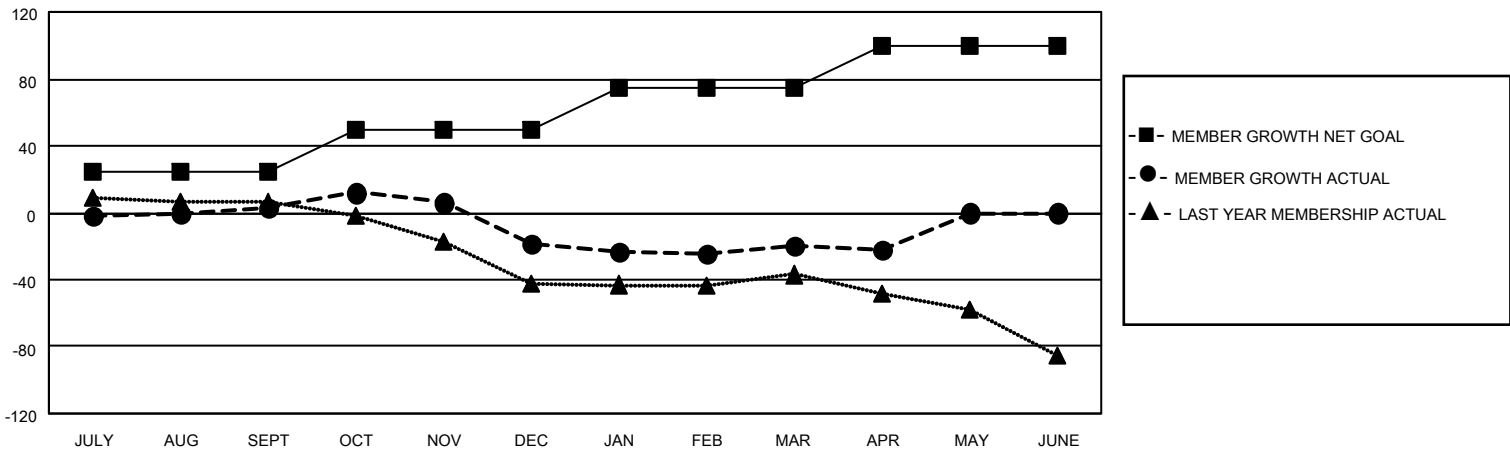
| Clubs | | | |
|-----------------------|---------------|-----------|---------------|
| RESULTS FOR 2025-2026 | | | |
| QUARTER | NEW CLUB GOAL | NEW CLUBS | DROPPED CLUBS |
| JULY/AUG/SEPT | 0 | 0 | 0 |
| OCT/NOV/DEC | 1 | 0 | 0 |
| JAN/FEB/MAR | 0 | 0 | 0 |
| APR/MAY/JUNE | 0 | 0 | 0 |

| Members | | | |
|-----------------------|------------------------|----------------------|----------------------------------------------|
| RESULTS FOR 2025-2026 | | | |
| QUARTER | MEMBER GROWTH NET GOAL | MEMBER GROWTH ACTUAL | DROPPED MEMBERS ACTUAL (including transfers) |
| JULY/AUG/SEPT | 25 | 38 | 21 |
| OCT/NOV/DEC | 25 | 30 | 50 |
| JAN/FEB/MAR | 25 | 14 | 16 |
| APR/MAY/JUNE | 25 | 9 | 9 |

GOALS AND ACTUAL NEW CLUBS CUMULATIVE



GOALS AND ACTUAL MEMBERS CUMULATIVE



| | | |
|----------------------------------------------------------------------------------|-----------------------------------------------------------|------------------------------------------------------------------------|
| DROPPED CLUBS: 0 | 21 CLUBS OF 46 ADDED 1 OR MORE NEW MEMBERS | GENDER DISTRIBUTION MALE 674 (60.56%) FEMALE 439 (39.44%) |
| DROPPED MEMBERS DECEASED 7 CLUB CANCELLED 0 OTHER 89 TOTAL 96 | CLICK HERE FOR CUMULATIVE MEMBERSHIP DATA | TOTAL FAMILY UNIT MEMBERS 296 FAMILY MEMBERS PAYING HALF DUES 149 |